



GROFF TRACTOR & EQUIPMENT  
SINCE - 1958

Your #1 Source for Everything Under Construction  
Equipment • Parts • Service • Rentals

[www.grofftractor.com](http://www.grofftractor.com)



# Rental Equipment

Well maintained equipment | Newer models | Wide selection | Variety of attachments



## When You Need to Expand Your Fleet Quickly Rent from Groff Tractor

- Clean, well maintained equipment
- Rent by the day, week or month
- Try before you buy!



### Table of Contents

<b>Rental Terms &amp; Conditions</b>	3	<b>Road Building Equipment</b>	
<b>Construction Equipment</b>		Asphalt Rollers	9
Skid Steer Loaders	4	Dirt Rollers—Single Drum	9
Compact Track Loaders	4	Milling Machines	9
Compact Track Loader & Skid Steer Attachments	4	Miscellaneous Road Building Equipment	9
Wheel Loaders	5	<b>Trenching Equipment</b>	
Loader Backhoes	5	Trench Boxes	10
Crawler Carriers	6	Manhole Boxes	10
Crawler Dozers	6	Bedding Boxes	10
Crawler Loaders	6	Road Plate	10
Articulated Trucks	6	<b>Aggregate Equipment</b>	
Excavators	7	Crushers	11
Hydraulic Breakers	8	Scalping Screens	11
Demolition Attachments	8	Track Stackers	11
		<b>Miscellaneous Equipment</b>	11







## Rental Terms & Conditions

**Rates subject to change based on market conditions and availability**

Delivery quotes available upon request.

### Taxes

All rates are subject to local state tax.

### Rates

<b>Daily</b>	Maximum Machine Hours =	8
<b>Weekly</b>	Maximum Machine Hours =	40
<b>Monthly</b>	Maximum Machine Hours =	176

Hours used in excess of maximum hours allowed will be charged in proportion to the rate contracted.

### Customer Responsibility

1. Provides qualified operator.
2. Ensures that normal daily maintenance is performed, including changing oil, grease, filters, etc.
3. Accepts liability for maintenance expense due to abnormal wear and/or damage to machine, tires, bucket and teeth.
4. Returns the machine in clean condition or pays a minimum additional charge of \$115.00 per hour for equipment cleaning.

### Fuel

Machine must be returned with a full tank of fuel, as received, or pay for fuel used.

### Insurance

Prior to release of machine, Renter shall provide a "Certificate of Insurance" naming Groff Tractor & Equipment, LLC as "Loss Payee" under the equipment floater policy for dual protection against physical damage and "Additional Insured" under the general liability policy, as approved by Groff Tractor & Equipment, LLC

Groff Tractor & Equipment, LLC makes no claim of suitability or fitness of performance for equipment rentals.



# Construction Equipment



## Skid Steer Loaders

Model	Net Horsepower	Operating Load	Tipping Load
SR160	57 HP	1,600 lb	3,200 lb
SR175	64 HP	1,750 lb	3,500 lb
SV185	57 HP	1,850 lb	3,700 lb
SR210	68 HP	2,100 lb	4,200 lb
SR240	68 HP	2,400 lb	4,800 lb
SR270	84 HP	2,700 lb	5,400 lb
SV280	68 HP	2,800 lb	5,600 lb
SV340	84 HP	3,400 lb	6,800 lb



## Compact Track Loaders

Model	Horsepower	Operating Load	Breakout Force
TR270	68 HP	2,700 lb	7,200 lb
TR310	68 HP	3,100 lb	8,680 lb
TR340	84 HP	3,400 lb	8,700 lb
TV370	68 HP	3,700 lb	8,776 lb
TV450	84 HP	4,500 lb	9,188 lb
TL8	74 HP	3,000 lb	6,856 lb
TL10V2	74 HP	3,600 lb	6,520 lb
TL12V2	111 HP	4,107 lb	7,874 lb



## Compact Track Loader & Skid Steer Attachments

- Auger (1 bit, 24" ext)
- 9" Auger Bit
- 12" Auger Bit
- 18" Auger Bit
- 24" Auger Bit
- 36" Auger Bit
- Blade
- Broom 72" Pickup; 84" Angle
- FAE UM125 Mulcher
- FAE UM150 Mulcher
- Planer 12"
- Planer 18"
- Planer 24"
- Pallet Forks
- Rockhound/Preparator
- Rockwheel
- Mower (brush)
- Grapple Bucket
- SS Loader Bucket
- Stump Grinder
- Trencher





# Construction Equipment

721



## Wheel Loaders

Model	Horsepower	Operating Weight	Bucket Capacity
521	131 HP	22,855 lb	2.00 yd <sup>3</sup>
621	162 HP	28,159 lb	2.75 yd <sup>3</sup>
721	179 HP	31,510 lb	3.50 yd <sup>3</sup>
821	205 HP	38,874 lb	4.50 yd <sup>3</sup>
921	225 HP	43,777 lb	4.75 yd <sup>3</sup>
1021	296 HP	53,791 lb	5.50 yd <sup>3</sup>
1121	320 HP	59,578 lb	6.25 yd <sup>3</sup>
L546	167 HP	31,967 lb	3.7 yd <sup>3</sup>
L556	228 HP	40,785 lb	4.7 yd <sup>3</sup>
L566	272 HP	52,910 lb	5.5 yd

*Models available may vary by location*



### Wheel Loader Attachments

- Forks
- Pipe Grabber Forks
- Hydraulic Brooms

580 Extendahoe



## Loader Backhoes

Model	Max Depth
580 Extendahoe	18' 3"
580 w/ IT Front	18' 3"
590	19' 7½"



### Loader Attachments

- Backhoe Forks (IT Style)
- Backhoe Brooms (96")
- Backhoe Side Dump Bucket



Forks



### Additional Backhoe Buckets

12", 18", 24", 30", 36"



# Construction Equipment



## Crawler Carriers

Model	Horsepower	Operating Weight	Carrying Capacity
RT6	155 HP	17,880 lb	12,000 lb
RT9	225 HP	26,180 lb	18,000 lb
RT14	310 HP	34,260 lb	28,000 lb
RT14R	320 HP	42,220 lb	28,000 lb



## Crawler Dozers

Model	Gross Horsepower	Weight	Description
650	68 HP	16,091 lb	104" Str., 96" Angled
750	96 HP	17,284 lb	104" Str., 96" Angled
850	97 HP	17,519 lb	104" Str., 89" Angled
850 winch	97 HP	—	Allied H4A Winch
1150	124 HP	25,300 lb	110" Str., 102" Angled
1150 winch	124 HP	—	Allied H5C Winch
1650	165 HP	39,550 lb	130" PAT blade
2050	205 HP	48,773 lb	135" PAT blade
2050 winch	205 HP	—	Allied H6H Winch
PR716	126 HP	33,510 lb	3.06 yd <sup>3</sup> – 4.07 yd <sup>3</sup> (blade capacity)
PR726	163 HP	36,590 lb	126" 6-way blade
PR736	204 HP	44,750 lb	178" Str., 145" Semi U

Models available may vary by location



Leica available, call for details



## Crawler Loaders

Model	Horsepower	Capacity
LR624/626	110 HP	2 yd <sup>3</sup>
LR634/636	150 HP	2.5 yd <sup>3</sup>



## Articulated Trucks

Capacity	Horsepower	Metric Tons
30 Ton	370 HP	30.9
40 Ton	444 HP	41.9



# Construction Equipment



## Excavators

Model	Weight	Dig Depth
<b>Compact Excavators</b>		
CX17/TB210R	4,000 lb	7' 3" – 5' 9"
CX26C/TB216	5,000 lb	7' 11" – 7' 10"
CX33C/TB230	7,000 lb	9' 3.6" – 9' 11"
CX37C/TB240	8,000 lb	10' 3" – 11' 4.4"
CX57C/TB260	12,000 lb	12' 9.4"
CX60C	13,500 lb	11' 9"
<b>Standard Excavators</b>		
CX80 or TB280 or 290	18,000 lb	13' 9" – 15'
CX130/CX145	30,000 lb	18' 8" – 20'
CX160	38,000 lb	19' 11"
CX160 <i>Mechanical thumb</i>	38,000 lb	19' 11"
CX160 <i>Hydraulic thumb</i>	38,000 lb	19' 11"
CX210/CX245	47,000 lb	21' 10"
CX250	55,000 lb	22' 8"
CX250LR	63,500 lb	47' 9"
CX300	65,500 lb	23' 4"
CX300 <i>Mechanical thumb</i>	65,500 lb	23' 4"
CX300 <i>Hydraulic thumb</i>	65,500 lb	23' 4"
CX350	80,000 lb	24' 1"
CX350LR	88,000 lb	46' 3"
CX490	108,000 lb	25' 4"
R920	48,280 lb	18' 8"
R926	64,705 lb	20' 5"
R936	85,209 lb	23' 2"

## Wheeled Excavators

A914	33,000 lb	16' 2"
------	-----------	--------

## Material Handlers

LH22 M	48,300 lb	—
LH30 M	64,200 lb	—
LH40 M	85,300 lb	—
LH50 M	90,200 lb	—
LH60 M	134,500 lb	—



2D/3D Leica system available



## Plate Compactors

Model	Compactor
Mini-Exc	HC350
BH/Midi-Exc	HC450
CX160	HC850
CX300	HC1050



## Additional Excavator Buckets

12", 18", 24", 30", 36",  
42", 48", 54", 60", 72"



# Construction Equipment



## Hydraulic Breakers

Model	Power
SBU 220	500 ft-lb
SBU 340	750 ft-lb
SBU 452	1,000 ft-lb
MB1000	2,200 ft-lb
MB1200	2,600 ft-lb
MB1500	3,300 ft-lb
MB1650	3,600 ft-lb
HB2500	5,500 ft-lb
HB3100	6,800 ft-lb
HB3600	8,000 ft-lb
HB4100	9,000 ft-lb



## Demolition Attachments

Model	Jaw Opening	Weight	Min Excavator Weight
-------	-------------	--------	----------------------

### Mobile Demolition Processors

MDP 20 CC	25"	4,600 lb	40,000 lb
MDP 20 CP	25"	5,250 lb	40,000 lb
MDP 27 CC	32"	6,300 lb	55,000 lb
MDP 27 CP	28"	6,950 lb	55,000 lb

### Universal Processors

UPX 250 SH	21"	6,300 lb	55,000 lb
UPX 250 CP	29"	6,800 lb	55,000 lb
UPX 250 CC	36"	6,300 lb	55,000 lb

### MSD Shears

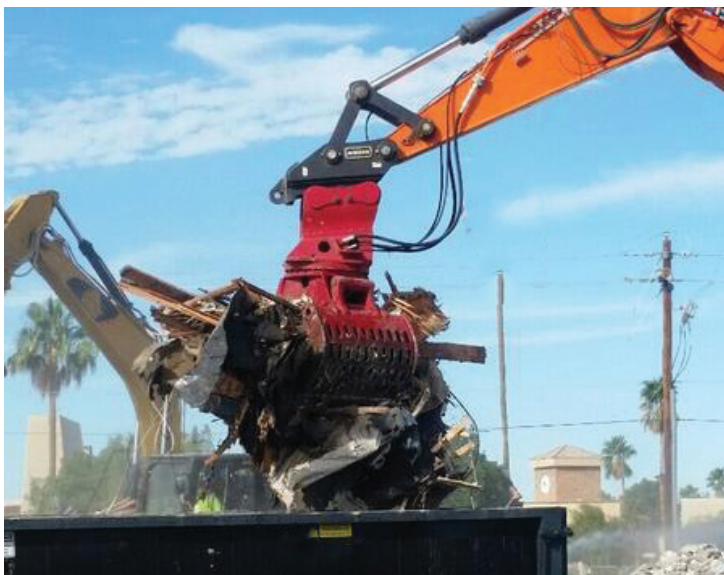
MSD 2500R	32"	14,600 lb	70,000 lb
MSD 3000	35"	13,300 lb	70,000 lb

### Mobile Demolition Grapples

MDG 160	35"	2,400 lb	28,600 – 44,000 lb
MDG 250	39"	3,300 lb	37,000 – 62,000 lb
MDG 310	47"	4,200 lb	55,000 – 83,600 lb
MDG 400	54"	6,000 lb	66,000 – 110,000 lb

### Concrete Pulverizers

CP 60	36"	3,000 lb	46,000 – 65,000 lb
CP 80	42"	4,475 lb	65,000 – 88,000 lb
CP 100	48"	6,150 lb	88,000 – 111,000 lb





# Road Building Equipment



HD+140i



H7i



W210



SM74J Sweeper

## Rollers

Model	Drum	Centrifugal Force
<b>Asphalt Rollers—Double Drum</b>		
HD8	36"	4,725 lb
HD10	39"	7,425 lb
HD12	48"	8,500 lb
HD13	51"	14,400 lb
HD14	54"	14,600 lb
HD70	59"	17,100 lb
HD110+	66"	27,225 lb
HD120+	78"	41,225 lb
HD140+	84"	41,225 lb
HDO12	48"	Oscillating & Vibratory
HDO70	59"	Oscillating & Vibratory
HDO90+	66"	Oscillating & Vibratory
HDO120+	78"	Oscillating & Vibratory
HDO140+	84"	Oscillating & Vibratory
<b>Dirt Rollers—Single Drum</b>		
RTX-SC2	Trench Roller	
H5i	54"	
H7i	66"	
H7iP Pad foot	66"	
H10i Pad	84"	
H12i Pad	84"	
H13i	84"	
H13iP Pad foot	84"	
H25i	87"	
Pad Foot Shell Kit	—	

## Milling Machines

Model	Drum
W60	—
W120	4' cutter drum—Rear Mount
W150	4' cutter drum—Center Mount
W150	5' cutter drum
W200/W210	7' 2" cutter drum
2' Head	W120/W150 FCS Only
3' Head	W120/W150 FCS Only

## Miscellaneous Road Building Equipment

- Super 700 Asphalt Path Paver
- SM74J Sweeper
- DT74J Sweeper

*Models available may vary by location*



# Trenching Equipment



## Trench Boxes

Material	Dimensions
Aluminum	8' x 8'
Aluminum	8' x 12'
Aluminum	8' x 20'
Steel	4' x 16'
Steel	4' x 20'
Steel	8' x 12'
Steel	8' x 16'
Steel	8' x 20'
Steel	8' x 24'

## Manhole Boxes

Material	Dimensions
Steel	4' x 8'
Steel	8' x 8'
Steel	8' x 10'

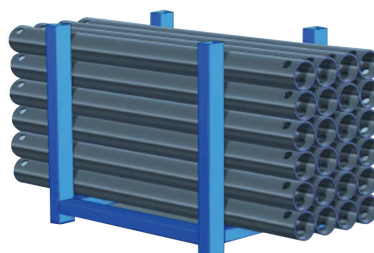


## Bedding Boxes

Material	Dimensions
Steel	7 yd <sup>3</sup>
Steel	9 yd <sup>3</sup>

## Road Plate

Material	Dimensions
Steel	8' x 20' x 1"



### Additional GME Trench Box Spreaders

24", 30", 36", 42",  
48", 60", 72"



# Aggregate Equipment



## Crushers

Model	Horsepower	Crushing Capacity
MC 100	221 HP	150 TPH
MC 110Z	—	300 TPH
MR 110Z	—	350 TPH
RM60	91 HP	90 TPH
RM70	140 HP	135 TPH
RM80	229 HP	180 TPH
RM100	306 HP	275 TPH



## Scalping Screens

Model	Horsepower	Feeding Capacity
MS 13 Z	100 HP	331 TPH
MS 15 Z	127 HP	440 TPH
MS 19 Z	127 HP	551 TPH



## Track Stackers

Model	Horsepower	Size	Capacity
KT80	49 HP	3' x 80'	500 TPH

# Miscellaneous Equipment

## Light Equipment

- Atlas Copco XAS185 Air Compressor
- Wacker Light Tower
- Wacker E-3000 Ground Heater
- Wacker Indirect Air Fired Heater Arctic Bear XHD
- Wacker BTS635S Cut-Off Saw w/ Blade
- Wacker BS50/BS60 Oil Injected Tamper
- Wacker VP1340 Vibratory Plate
- Wacker WP1550 Vibratory Plate

## Landscaping Equipment

- Reinco TM35KUB Mulcher (Skid Mount)
- Reinco TM35XKUB Mulcher (Trailer Mount)
- Hydroseeder

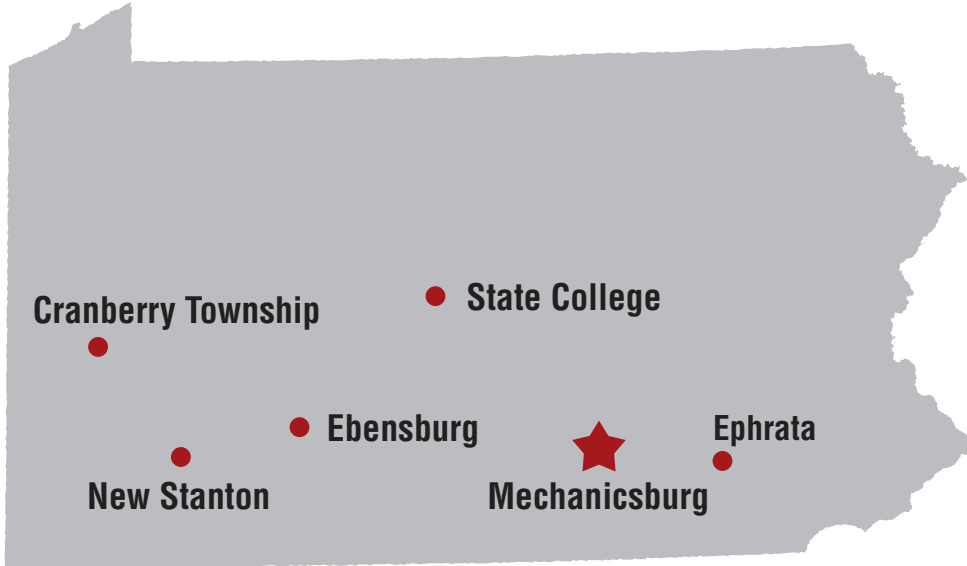


Reinco TM35XKUB Mulcher (Trailer Mount)





www.grofftractor.com



## LOCATIONS

**Cranberry Township**  
100 Smith Dr  
Cranberry Township, PA 16066  
(724) 898-1535  
(877) 33-GROFF (47633)

**Ebensburg**  
4355 Admiral Peary Hwy  
Ebensburg, PA 15931  
(814) 472-7300  
(877) 97-GROFF (47633)

**Ephrata**  
20 Stauffer Ln  
Ephrata, PA 17522  
(717) 738-0220  
(888) 66-GROFF (47633)

**Mechanicsburg**  
*Corporate Headquarters*  
6779 Carlisle Pike  
Mechanicsburg, PA 17050  
(717) 766-7671  
(800) 33-GROFF (47633)

**New Stanton**  
963 South Center Ave  
P.O. Box 510  
New Stanton, PA 15672  
(724) 755-0124  
(888) 82-GROFF (47633)

**State College**  
Penn Eagle Industrial Park  
210 Rolling Ridge Dr  
Bellefonte, PA 16823  
(814) 353-8400  
(888) 47-GROFF (47633)

## Equipment

- Air Compressors
- Articulated Trucks
- Asphalt and Soil Compactors
- Asphalt Pavers
- Asphalt Distributors
- Compaction Testing
- Compact Track Loaders
- Crawler Tractors/Dozers
- Crushers
- Cut-off Saws
- Demolition Equipment
- Excavators
- Generators
- Hydraulic Breakers
- Lasers
- Light Towers
- Loader Backhoes
- Machine Control Systems
- Milling Machines/Stabilizers
- Motor Graders
- Mowers
- Pumps
- Ride On Brooms
- Rigid Trucks
- Skid Steer Loaders
- Telehandlers
- Trailers
- Trench Shielding and Shoring
- Wheel Loaders

## Services

- Continuing education in industry technology
- CNH revolving account for parts, services, rental and accessory purchases
- Extended warranties
- Foam filled tires
- Hydraulic hose assemblies
- Laser and machine control system repair center
- Line boring and welding
- Machine inspection maintenance
- Oil and wear analysis
- Online parts catalog
- On-site field service



\*Not all brands available at all locations